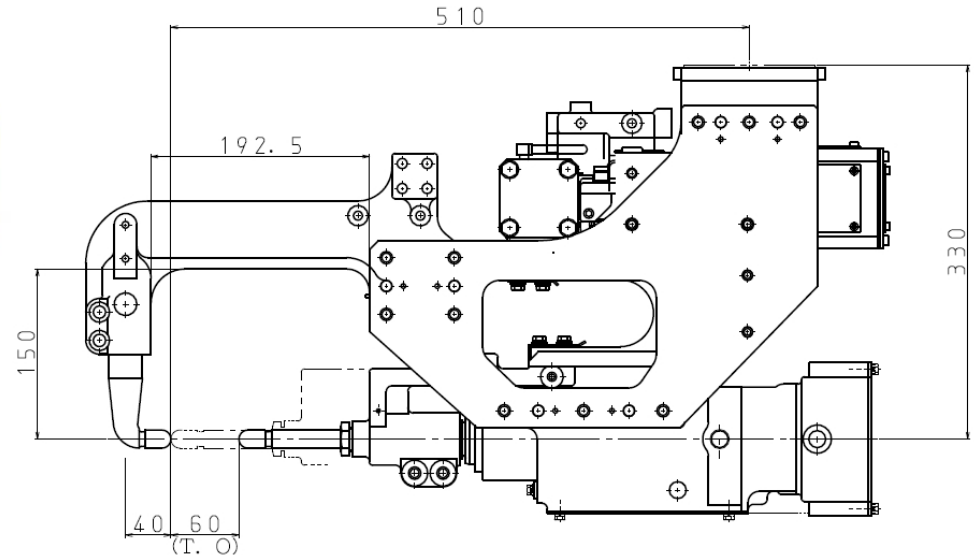
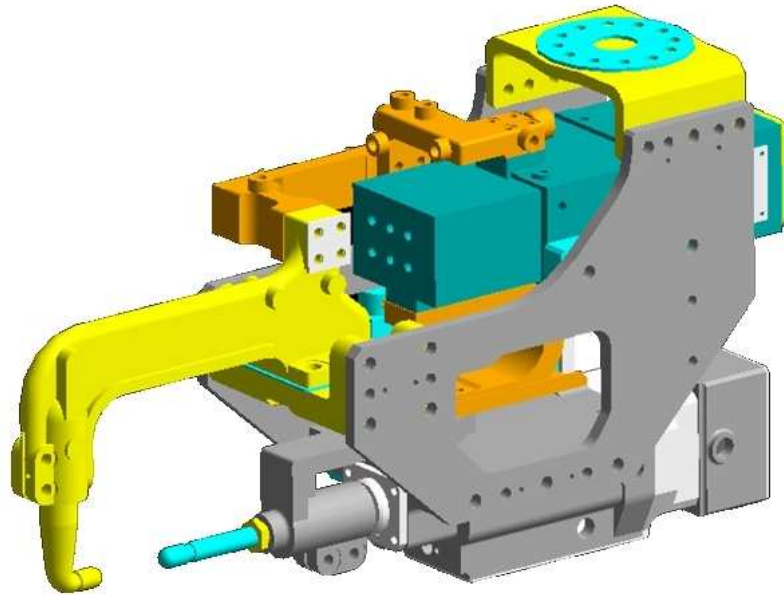


# SERVO GUN TMC-472-12 (S Series C Type · Small Size)

## GUN SPECIFICATION



### TMC-472-12 Specification

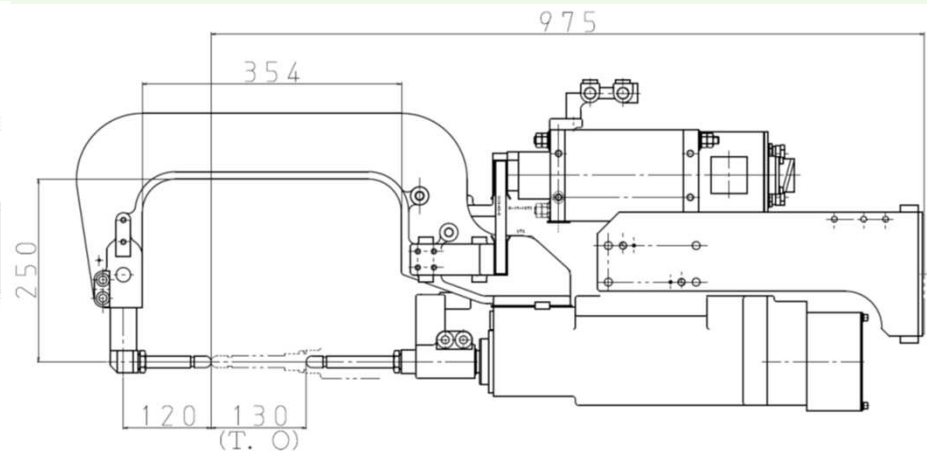
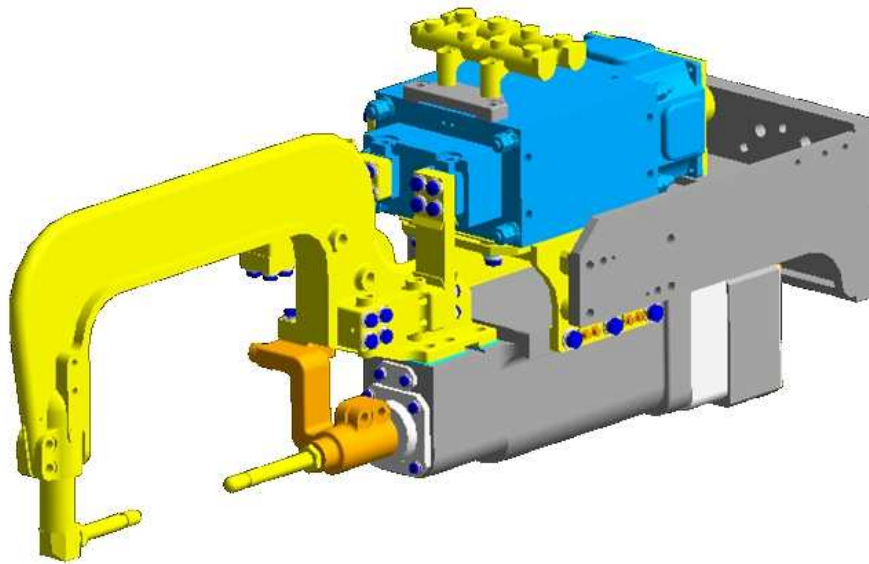
APPROX TOTAL MASS (kg)	58
ELECTROD FORCE (N)	3920
MAX SHORTCIRCUIT CURRENT (A)	13000
DUTY(%)	10
STROKE (mm)	0~60

### Product Feature

- ✓ By weight saving of gun body, it can be mounded small robot.(80kg portable)
- ✓ Equipped with inverter transformer.
- ✓ This gun supported each robot maker.
- ✓ Various arm shapes can be selected.
- ✓ Robots mount direction can be selectable optionally.  
(Selectable top & bottom & back each direction)
- ✓ By Changing arm, can be cope to pressurization force up to 6000N

# SERVO GUN TMC-302-46 (Middle Type)

## GUN SPECIFICATION



### TMC-302-46 Specification

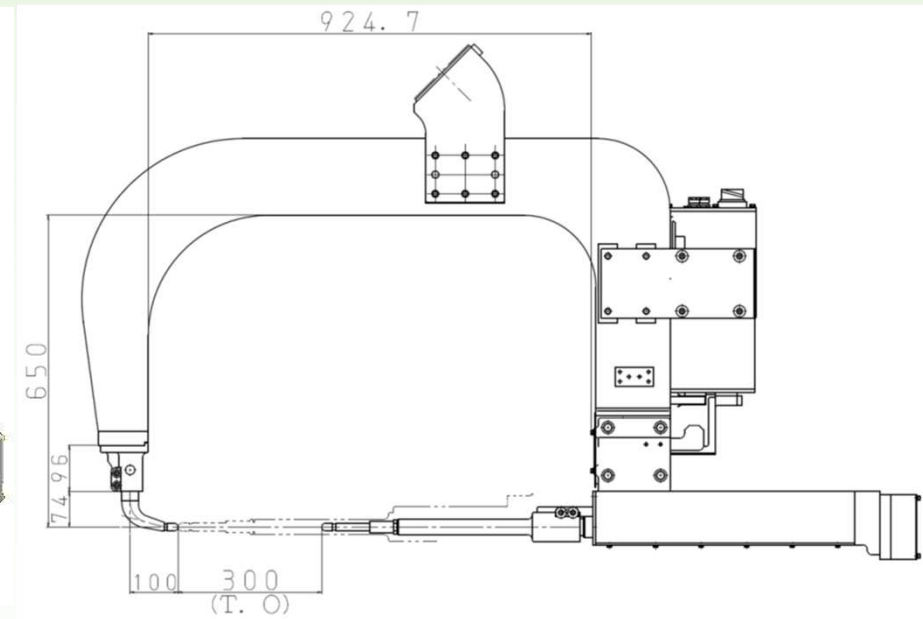
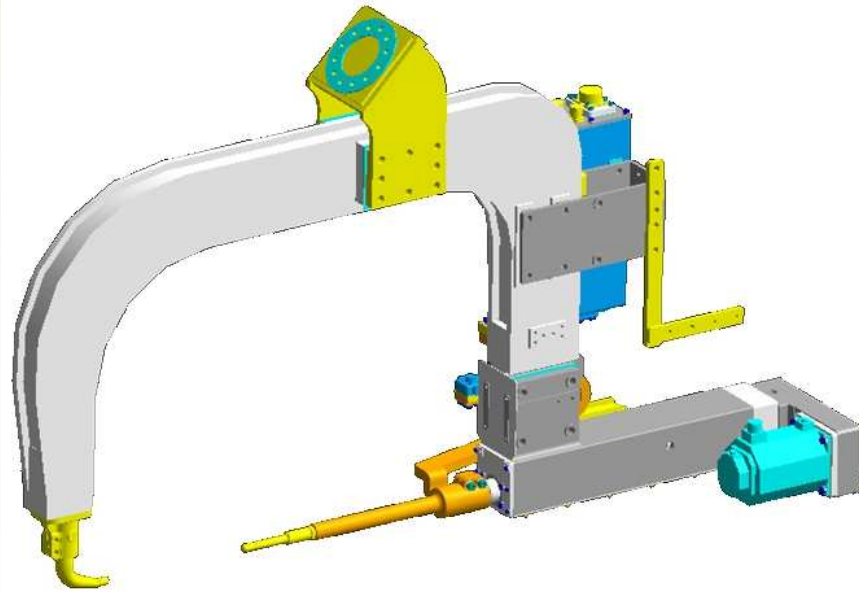
APPROX TOTAL MASS (kg)	127
ELECTROD FORCE (N)	3920
MAX SHORTCIRCUIT CURRENT (A)	17000
DUTY(%)	10
STROKE (mm)	0~130

### Product Feature

- ✓ Various arm shapes can be selected.
- ✓ Equipped with AC transformer.  
(Can be Inverter transformer selectable.)
- ✓ This gun supported each robot maker.
- ✓ Robots mount direction can be selectable optionally.
- ✓ By Changing arm, can be cope to pressurization force up to 6000N.

# SERVO GUN TMC-309-5 (Large Type)

## GUN SPECIFICATION



### TMC-309-5 Specification

APPROX TOTAL MASS (kg)	158
ELECTROD FORCE (N)	3920
MAX SHORTCIRCUIT CURRENT (A)	15000
DUTY(%)	10
STROKE (mm)	0~300

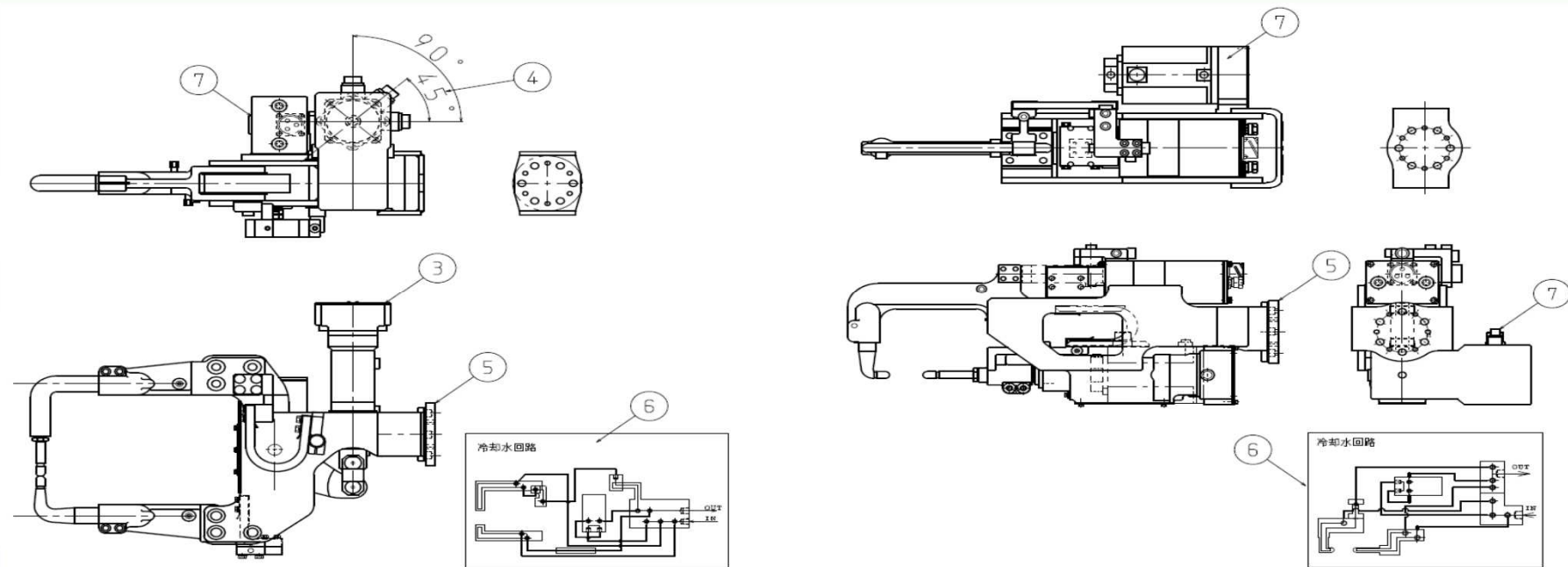
### Product Feature

- ✓ Various arm shapes can be selected.
- ✓ Equipped with inverter transformer.
- ✓ This gun supported each robot maker.
- ✓ Robots mount direction can be selectable optionally.
- ✓ By Changing arm, can be cope to pressurization force up to 6000N.

# S series

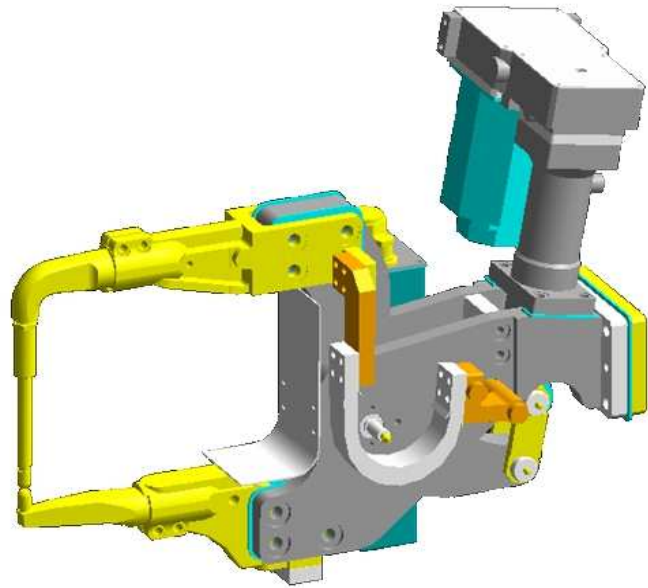
## S series of Technical features (70kg~80kg)

- ① Realize miniaturization and weight saving by new model inverter transformer and aluminum material use thoroughly.
- ② The X type can plan weight saving more by using aluminum materials for an arm.
- ③ Because pressurize it by the thrust of the pull direction of the gear case ,as for the X type there is not vibration of a drive unit by the pressurization movement and the motor.
- ④ In the position of the motor for gear case can be  $45^\circ$  is possible in addition to conventional  $0^\circ$  ,  $90^\circ$  too.
- ⑤ Installation PCD of the robot is can be possible with  $\phi 92, \phi 125$  (Plate addition).
- ⑥ Coolant piping is IN:1 place ,Circuit in gun:3 circuit,OUT:1 place.
- ⑦ Gather a motor and a transformer on one side (C tape only as for motor) the shape that there is no other side (X type only as for Flexible conductor)



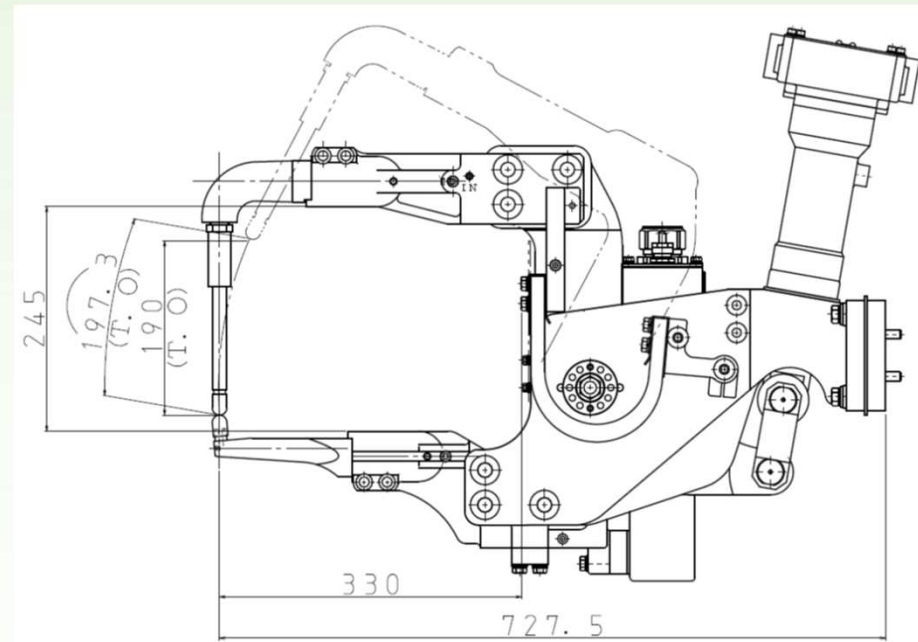
# SERVO GUN TMX-668-42 (SX Type · Small Type)

## GUN SPECIFICATION



### TMC-668-42 Specification

APPROX TOTAL MASS (kg)	77
ELECTROD FORCE (N)	5880
MAX SHORTCIRCUIT CURRENT (A)	1600
DUTY(%)	10
STROKE (mm)	0~190



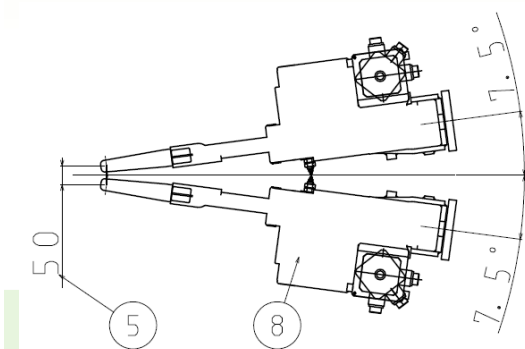
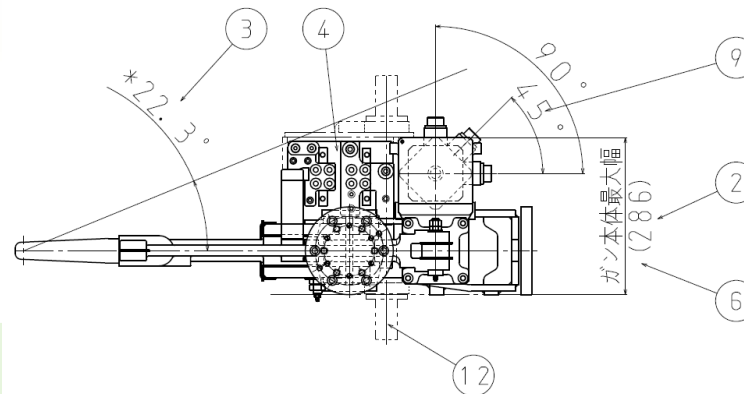
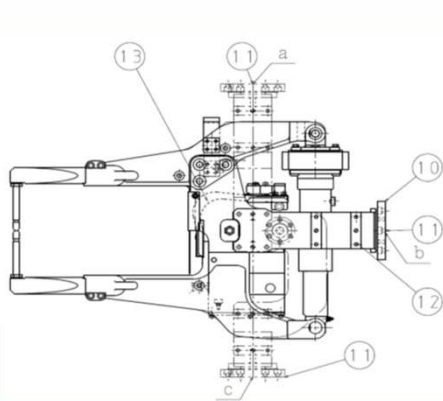
### Product Feature

- ✓ By weight saving of gun body, it can be mounded small robot.(80kg portable)
- ✓ Equipped with inverter transformer.
- ✓ This gun supported each robot maker.
- ✓ Various arm shapes can be selected.
- ✓ Robots mount direction can be selectable optionally.
- ✓ By Changing arm, can be cope to pressurization force up to 6000N.

# M series

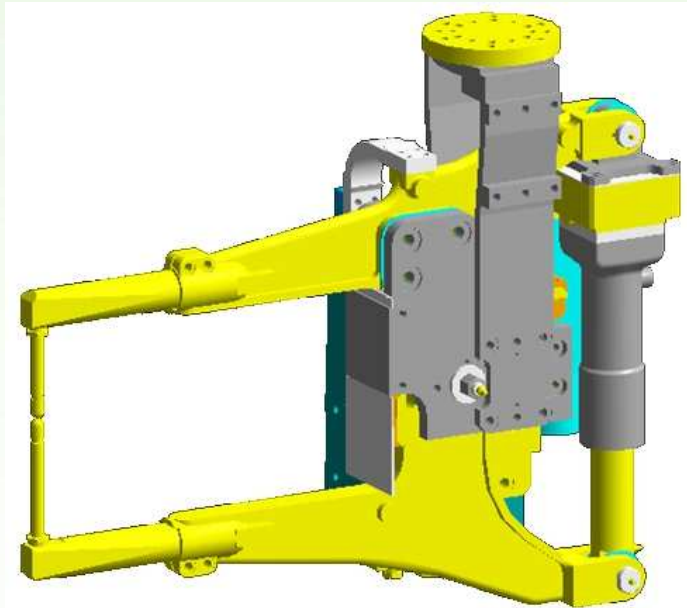
## M series of Technical features

- ① M series is module constitution and a wide variation is provided by the recombination of each parts.
- ② Maximum wide of gun 286mm (The conventional ratio approx 1/2)
- ③ Angle of the backward parts and spot point.(※mark) 22.3° (Conventional gun 24° )
- ④ Gather a motor and a transformer on one side the shape that there is no other side.
- ⑤ Can be wide it with an spot point of the 50mm at the minimum pace at the same time when add an angle to a R/L symmetry gun.
- ⑥ Coolant piping of hoses are is to fit in the maximum wide of the gun therefore do not appear outside.
- ⑦ Coolant piping is IN:2 place ,Circuit in gun:4 circuit,OUT:2 place(2-4-2) ratio1/3 conventional as for the total extension of the hose.
- ⑧ R/L gun is can be because it becomes all the symmetric parts without R/L other than 2 conductors it becomes available by recombination.
- ⑨ In the position of the motor for gear case can be 45° is possible in addition to conventional 0° , 90° too.
- ⑩ Installation PCD of the robot is can be possible with  $\phi 92, \phi 125$  (Plate addition).
- ⑪ As for the robot installation bracket,3 directions of Upper(a),Back(b),Under(c), are possible.
- ⑫ The retrofit bracket is a standard can be attach the knuckle for stands at the time of the changer use too (Option)
- ⑬ Flexible conductor is completely protected by a spatter cover.



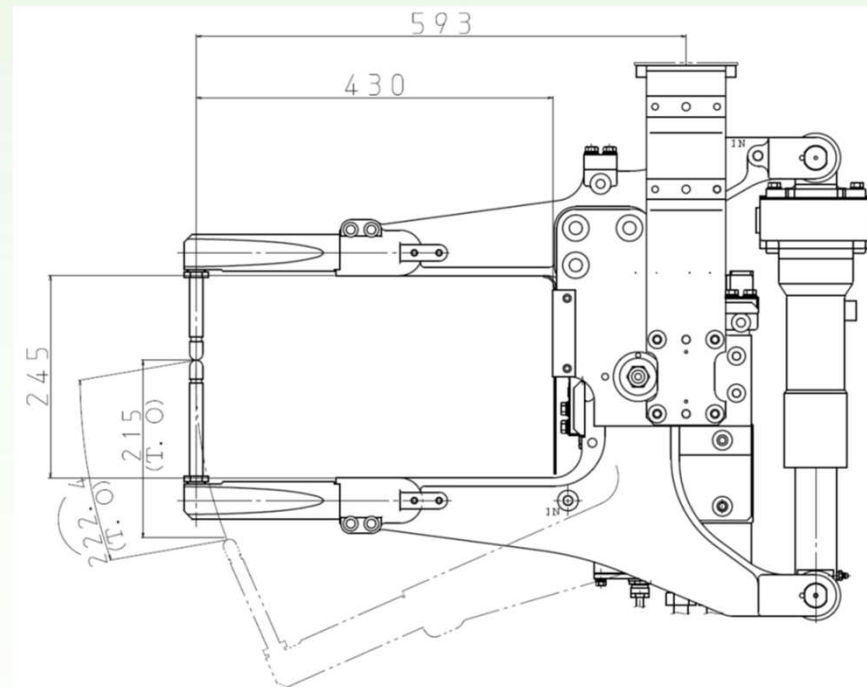
# SERVO GUN T M X - 5 7 0 - 1 4 5 ( M Series X Type・Middle Size )

## 仕様



### TMC-570-145 仕様

重量(kg) APPROX TOTAL MASS(kg)	105
加圧力(N) ELECTROD FORCE(N)	3920
溶接電流(A) MAX SHORTCIRCUIT CURRENT(A)	15000
使用率(%) DUTY(%)	10
ストローク(mm) STROKE(mm)	0~210

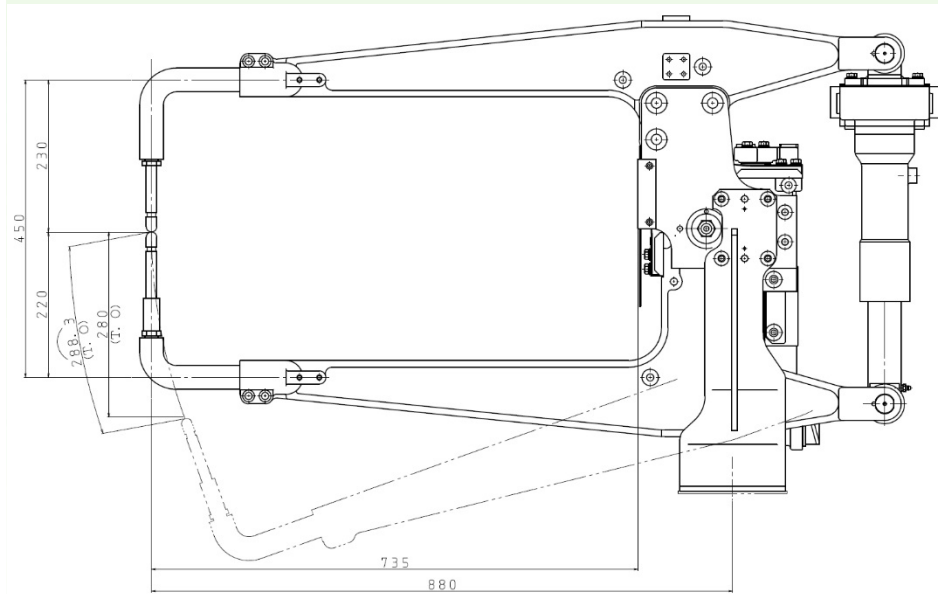
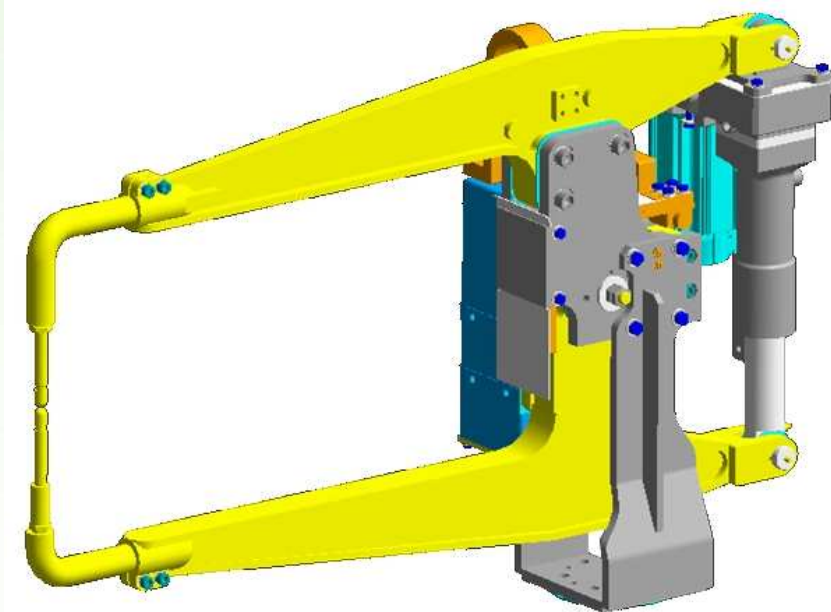


### Product Feature

- ✓ Various arm shapes can be selected.
- ✓ Equipped with inverter transformer.  
(Can be AC transformer selectable.)
- ✓ This gun supported each robot maker.
- ✓ Robots mount direction can be selectable optionally.
- ✓ By Changing arm, can be cope to pressurization force up to 6000N.

# SERVO GUN TMX-630-37 (M Series X Type Large Type)

## 仕様



## TMC-630-37 仕様

重量(kg) APPROX TOTAL MASS(kg)	130
加圧力(N) ELECTROD FORCE(N)	3136
溶接電流(A) MAX SHORTCIRCUIT CURRENT(A)	15000
使用率(%) DUTY(%)	10
ストローク(mm) STROKE(mm)	0~280

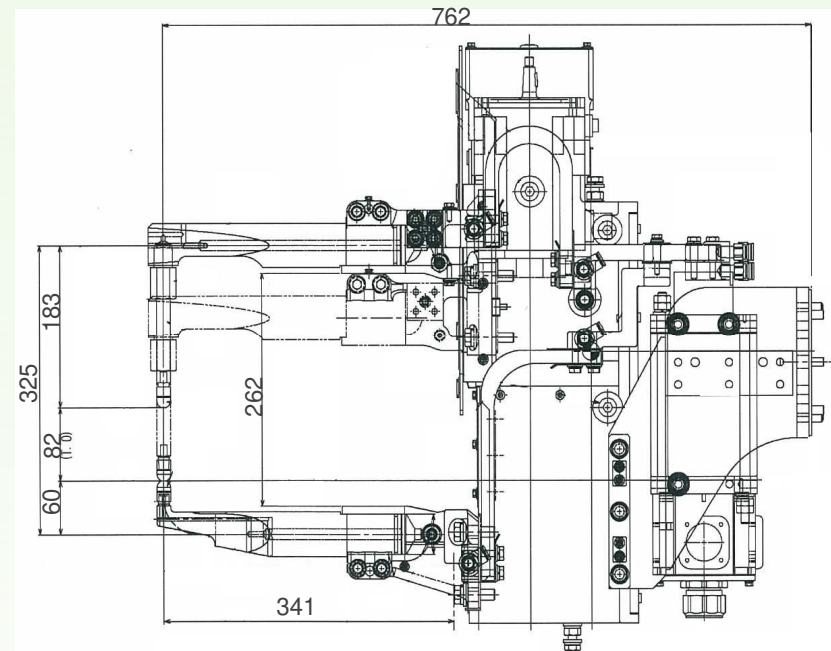
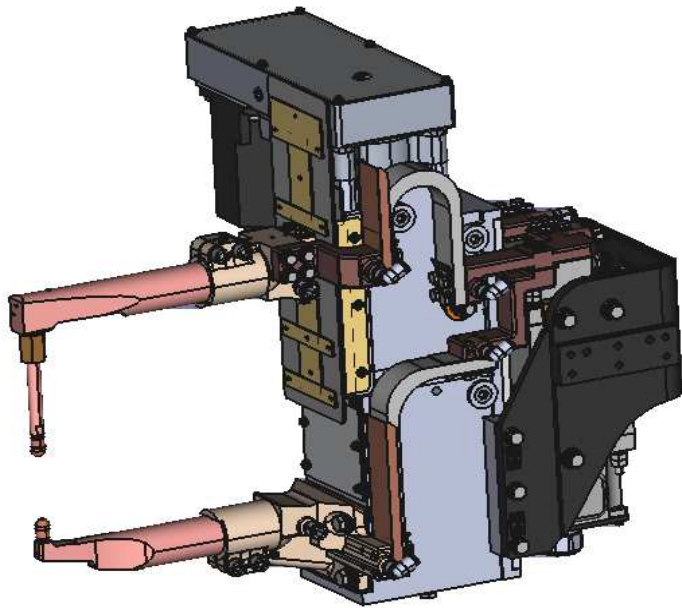
## 特長

- ✓ Various arm shapes can be selected
- ✓ Equipped with inverter transformer.  
(Can be AC transformer selectable.)
- ✓ Robots mount direction can be selectable optional
- ✓ Robots mount direction can be selectable optionally.  
(Selectable top & bottom & back each direction)
- ✓ By Changing arm, can be cope to pressurization force up to 6000N.



# 直動サーボガン TMC-506-61 (中型タイプ)

## 仕様



## TMC-506-61 仕様

重量(kg)	
APPROX TOTAL MASS(kg)	143
加圧力(N)	4900
ELECTROD FORCE(N)	4900
溶接電流(A)	14000
MAX SHORTCIRCUIT CURRENT(A)	14000
使用率(%)	50
DUTY(%)	50
ストローク(mm)	82
STROKE(mm)	82

## Product Feature

- ✓ Various arm shapes can be selected
- ✓ Equipped with AC transformer.  
(Can be Inverter transformer selectable.)
- ✓ This gun supported each robot maker.
- ✓ Robots mount direction can be selectable optionally.
- ✓ By Changing arm, can be cope to pressurization force up to 6000N.